



A Survivor's Guide to
RIGHTS & OPTIONS

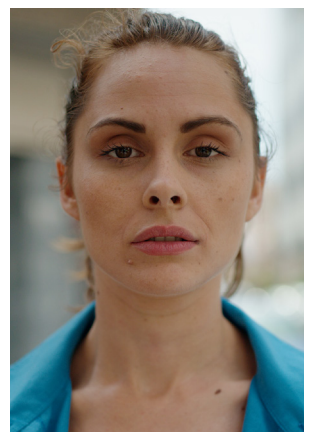
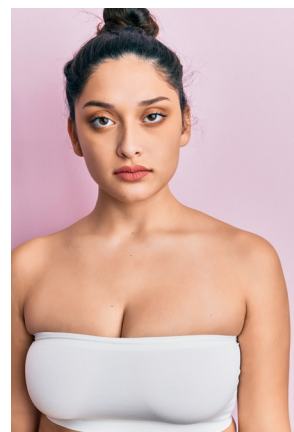





TABLE OF CONTENTS

First Steps to Consider	1
Restraining Orders	2
No Contact Directives	2
Reporting an Incident to Law Enforcement	4
Reporting an Incident to UNM	5
Amnesty	5
Know Your Rights	8
Support Sites for Students	9
Supportive Measures for Students	9
Support Sites for Employees	10
Supportive Measures for Employees	10
On-campus Resources	11
Community Resources	17
Important Definitions	27
How UNM Protects Your Confidentiality	35
More Information	35


First Steps to Consider

If you need medical assistance, don't wait.

More medical facilities, including those located near UNM's Branch locations, are listed in the Resources section.

 **UNM Hospital**


2211 Lomas Blvd NE
Albuquerque, NM 87106
505-272-2111

 **Sandoval Regional Medical Center**

3001 Broadmoor Blvd NE
Rio Rancho, NM 87144
505-994-7000

 **Presbyterian Hospital**

1100 Central Ave SE
Albuquerque, NM 87106
505-841-1234

 **Veteran Affairs Health Care**

1501 San Pedro Dr SE
Albuquerque, NM 87108
505-265-1711

Any healthcare professional can treat injuries and take necessary steps to address concerns of pregnancy and/or sexually transmitted infections. However, only specially trained **Sexual Assault Nurse Examiners (SANE Nurses)** can collect forensic evidence, which they may be able to do for up to five (5) days after an assault. **This evidence, which may only be available immediately after an incident involving assault, can be saved aside regardless of whether you choose to report the incident immediately, at a later time, or never at all.** *The police can provide transportation, even if you do not want to file a police report.*

 **Albuquerque SANE**

625 Silver Ave SW, 2nd Flr
Albuquerque, NM 87102
505-884-SANE (7263)
info@abqsane.org

Before your visit to SANE, **try to avoid:**

- ✗ Washing or changing out of the clothes or underwear you wore during or after the incident
- ✗ Cleaning any part(s) of your body, including hands
- ✗ Using a douche or tampon
- ✗ Cleaning the room or linens where the incident occurred
- ✗ Eating or drinking

The importance of preserving evidence

It is not uncommon for a survivor to forget details about an assault or other significant event, or to not want to report it. Even if you do not want to participate in a criminal or administrative process right away, you might change your mind later. Taking the time to document everything can help you reconstruct a timeline of events should you wish to describe what happened down the road. Preserving evidence within the hours and days following an incident **may also assist in proving a criminal offense occurred or may be helpful in obtaining a protection order.** It also helps University officials determine whether a policy violation occurred should you wish to participate in the administrative grievance process.

Here are some tips:

- Urinate as soon as possible in an airtight container instead of the toilet and keep it with you. Forensic examiners can test the urine at a time of your choosing for illicit substances such as Rohypnol.
- Ask a trusted friend or family member to help you take photos of any bruising, scratches, or other physical injuries you suffered from the incident.
- Write down the names of people who might have seen you immediately before or after the incident, people with whom you talked about the abuse, misconduct, or incident, or people who you believe could serve as a witness.
- Save all text messages, emails, videos, photos, call logs, social media posts (screenshots can be helpful), and any other relevant information that helps document the other person's behavior.
- Maintain a log of the time(s) you interacted with the perpetrator or they attempted to contact you.
- Take photos of any property damaged by the perpetrator.

RESTRAINING ORDERS

A Restraining Order is a court order that restricts someone from threatening, harassing, contacting, or going near you or your family, or even from having a gun. They are put in place for those who are worried about their safety because someone stalked, threatened, abused, or assaulted them. You do not need a lawyer to obtain one.

A **Domestic Violence Order of Protection** is a type of Restraining Order the court issues for someone whose household member has abused or threatened to abuse them, regardless of whether they live together, or for someone who has been stalked or sexually assaulted by someone who is not a household member. A **Civil Harassment Restraining Order** (Temporary Restraining Order, or TRO) is another option for when you don't have any kind of relationship with the other person. A court may grant a Restraining Order after it receives a statement in the form of a petition or affidavit from a petitioner (the person requesting it).

WHO CAN HELP ME OBTAIN A RESTRAINING ORDER?

Every District Attorney's office in the State of New Mexico has a Victim Advocate who can help with forms and applications, accompany victims to court, and provide notices and reminders to the victim about hearing dates and an offender's custody status.

NO CONTACT DIRECTIVES

Unlike a Restraining Order which only a court can issue and enforce, a **No Contact Directive (NCD)** is an administrative, interim protective measure between two or more persons affiliated with UNM. The NCD is a means of preventing unwanted direct or directed contact and communication and serves as a way to help prevent harassment or disruptions to the learning environment within the University setting.

The NCD is not an Order of Protection and the University has no authority to limit contact and communication with someone unaffiliated with the University. The **Dean of Students Office (DOSO)** issues NCDs for students and works with officials at the Health Sciences Center colleges, the School of Law, and Branch Campuses to issue NCDs for students in these programs. Students can request an NCD from DOSO directly (505-277-3361 or doso@unm.edu). Both students and employees can also request an NCD as a supportive measure from the **Office of Compliance, Ethics & Equal Opportunity (CEEO)** (505-277-5251 or ceeo@unm.edu). To report a violation of an NCD, contact the office issuing the directive.

TO REQUEST AN NCD THROUGH A CONFIDENTIAL RESOURCE:

- **LoboRESPECT Advocacy Center:** 505-277-2911 | loborespect@unm.edu
- **LGBTQ Resource Center:** 505-277-5428 | lgbtqrc@unm.edu
- **Women's Resource Center:** 505-277-3716 | women@unm.edu
- **Vassar House:** 505-506-0604 | vassarhouse@salud.unm.edu
- **Learning Environment Office:** 505-272-7867 | hsc-leo@salud.unm.edu

UNM'S RESPONSIBILITIES IN RELATION TO ORDERS OF PROTECTION

UNM encourages anyone who petitions for (requests) an Order of Protection to provide a copy of their petition to the University of New Mexico Police Department. In addition to maintaining a hard copy for the petitioner so it is always accessible in the event of a technological failure, UNMPD can help with:

- Obtaining an Order and, when the respondent lives on or near campus, assisting with serving the order to the respondent,
- Locating a Domestic Violence Advocate to assist you through the court hearing proceedings and driving you to your meetings with them, and
- Conducting extra patrols at your residence if you reside on campus (or working with external agencies to help if you live off campus).





“

*At any
given
moment
you have
the power
to say this
is not how
the story
is going to
end.*

- CHRISTINE MASON MILLER

”

REPORTING AN INCIDENT TO LAW ENFORCEMENT

UNM strongly encourages all members of the community (faculty, staff, students, and visitors) to report any crimes immediately to law enforcement. However, the University also recognizes that victims have a choice to make such a report and have the right to report anonymously or even decline police notification or involvement. Any information you provide is only shared among UNM officials on a need-to-know basis and as authorized under University Administrative Policy and applicable federal and state law. Public records such as UNM's daily crime log never include personally identifying information about victims.

! If you or someone else is in immediate danger, dial 911.

DOES UNM HAVE ITS OWN POLICE FORCE?

Yes. The University of New Mexico Police Department (UNMPD) Officers at UNM's Main, Gallup, and Valencia Campuses meet all state certification standards mandated by the New Mexico Department of Public Safety and are commissioned by the UNM Board of Regents (Section 29-5-2 NMSA 1978). They have full power of peace officers on campus and in Greek housing, which includes the authority to enforce all applicable laws and campus traffic regulations, as well as the authority to arrest. Officers investigate complaints of criminal activity on campus, partner with other police agencies to solve them, and work closely with their respective District Attorney's Office to ensure effective prosecution.

HOW DO I MAKE A POLICE REPORT?

To report a crime to law enforcement, UNM recommends calling the non-emergency number of the agency that has primary jurisdiction where the incident occurred. If you are unsure of which one to call, contact UNMPD (505-277-2241) and they can help you determine which agency to notify.

WHAT CAN I EXPECT AFTER REPORTING?

A patrol Officer is typically the first to respond and speak with the person reporting a crime, along with any other parties present. At UNMPD, specially trained Officers called Sexual Misconduct and Assault Response Team (SMART) Officers investigate crimes of sexual assault, domestic violence, dating violence, and stalking and depending on the situation, may be the first to respond. In some cases, a victim might have to repeat what happened to them more than once. In addition to the victim's statement, Officers will try to gather evidence and information from other parties, such as suspects or witnesses, to build a case that is strong enough for the District Attorney's Office to prosecute in court.

CAN SOMEONE HELP ME REPORT TO POLICE?

Yes. You have the right to be assisted by campus authorities in notifying law enforcement authorities at any time if that is what you choose to do. You also have the option to decline to notify such authorities. For help with connecting with law enforcement, contact the Office of Compliance, Ethics & Equal Opportunity at 505-277-5251.

UNM POLICE AGENCIES	 ALBUQUERQUE CAMPUS 505-277-2241 2500 Campus Blvd NE Albuquerque, NM 87131 (west end of Hokona Hall)	 VALENCIA CAMPUS 505-925-8570 280 La Entrada Rd Los Lunas, NM 87031	 GALLUP CAMPUS 505-863-7620 Gurley Hall Gallup, NM 87301
----------------------------	------------------------------------------------------------------------------------------------------------------------------------------------------------------------------------------------------------	------------------------------------------------------------------------------------------------------------------------------------------------------------------------	---------------------------------------------------------------------------------------------------------------------------------------------------------------

LOCAL POLICE AGENCIES	 ALBUQUERQUE POLICE University Area Command 505-242-2677 1009 Bradbury Dr SE Albuquerque, NM 87106	 LOS LUNAS POLICE 505-865-9130 660 Main St SW Los Lunas, NM 87301	 GALLUP POLICE 505-863-9365 451 Boardman Drive Gallup, NM 87301
	 RIO RANCHO POLICE 505-891-7226 500 Quantum Rd NE Rio Rancho, NM 87124	 LOS ALAMOS CO POLICE 505-662-8222 2500 Trinity Dr #A Los Alamos, NM 87544	 TAOS CO SHERIFF'S OFFICE 575-758-4656 599 Lovato Pl Taos, NM 87571



REPORTING AN INCIDENT TO UNM

■ HOW UNM RESPONDS TO REPORTS OF SEXUAL ASSAULT, DOMESTIC VIOLENCE, DATING VIOLENCE & STALKING

The **Office of Compliance, Ethics & Equal Opportunity (CEEEO)** is the independent, impartial, and neutral campus office designated to respond administratively to allegations of any Violence Against Women Act (VAWA) crime (sexual assault, domestic violence, dating violence, or stalking), regardless of where the incident occurred.

A Complainant (victim) may file a report of sexual assault, domestic violence, dating violence, or stalking to obtain information regarding their rights, the availability of supportive measures, and the option to file a complaint to initiate an investigation.

Through UNM's grievance process, a student or employee accused of sexual assault, domestic violence, dating violence, or stalking in a report to the University has the potential to be found responsible for violating one or more of the following University Administrative Policies (UAPs) at UNM:

- **UAP 2720:** Equal Opportunity and Prohibited Discrimination and Related Misconduct
- **UAP 2745:** Clery Act Compliance
- **UAP 2740:** Sex Discrimination Including Sexual Misconduct
- *For reports of incidents that occurred prior to August 1, 2024:* **Student Code of Conduct** (Section 2)

UNM's **CEEEO Grievance Procedure (CGP)** dictates the process by which UNM responds to a report of sexual assault, domestic violence, dating violence, or stalking, regardless of which policy is invoked. The grievance process is the same for UNM students, faculty, and staff. *CEEEO's Discrimination Grievance Procedure (DGP) dictates the process for reports of sex-based incidents that occurred prior to August 1, 2024.*

■ JURISDICTION

Regardless of where the alleged conduct occurred, a VAWA crime is considered jurisdictional to CEEEO if at least one of the parties involved is affiliated with the University through enrollment, employment, or contact and at least one of the following conditions is met:

- The conduct occurred in the context of a UNM employment or educational program or activity.
- The conduct has continuing effects on campus or in an off-campus sponsored program or activity.

AMNESTY

UNM encourages reporting of misconduct and crimes by Complainants and witnesses. Sometimes, Complainants, Respondents, and Witnesses are hesitant to report to UNM officials or participate in grievance processes because they fear that they themselves may be in violation of certain University policies, such as underage drinking or use of illicit drugs at the time of the incident. To encourage reporting and participation, UNM maintains a policy of offering parties and witnesses amnesty from minor UNM policy violations, such as underage consumption of alcohol or the use of other illicit drugs, related to the incident. Amnesty does not apply to more serious allegations such as physical abuse of another or illicit drug distribution.

Reports involving VAWA allegations that meet the following criteria may specifically invoke **UAP 2740** pursuant to **Title IX of the Education Amendments of 1972**.

- The conduct is based on the Complainant's perceived or actual sex, sex stereotypes, sex characteristics, gender identity, sexual orientation, or pregnancy or related conditions.
- The conduct took place on campus or on property owned or controlled by UNM, at a UNM-sponsored event, or in a building owned or controlled by UNM or a UNM-recognized student organization.
- The Complainant must be participating or attempting to participate in UNM's educational programs or activities at the time alleged conduct occurred.
- The Respondent is a member of the UNM community.
- *For reports of incidents that occurred prior to August 1, 2024:* The conduct occurred within the United States.

Even in cases where the report is considered nonjurisdictional because the Respondent is unaffiliated with the University, a current or prospective student or employee is entitled to supportive and protective measures after filing a report. If a report falls within CEEO's jurisdictional scope, a party may choose to resolve the report or concern through an alternative resolution or investigation.*

■ ALTERNATIVE RESOLUTION

An alternative resolution (AR) is a path designed to eliminate the alleged discriminatory or harassing conduct, prevent its recurrence, and remedy its effects in a manner that ensures compliance, along with the safety and welfare of the campus community. This is an informal process where an investigation is not conducted and the allegations in the report are neither corroborated nor contested. An AR is **not** disciplinary in nature.

■ INVESTIGATION

During an investigation, CEEO acts as a neutral finder of facts. A Compliance Specialist assigned to the case conducts interviews with the Complainant, Respondent, and any witnesses, gathers evidence, and compiles an Investigative Report. After both parties have had a chance to review it and add any new information they may have, CEEO concludes the investigation, finalizes the Investigative Report, and provides it simultaneously to both parties and the UNM Hearing Office.

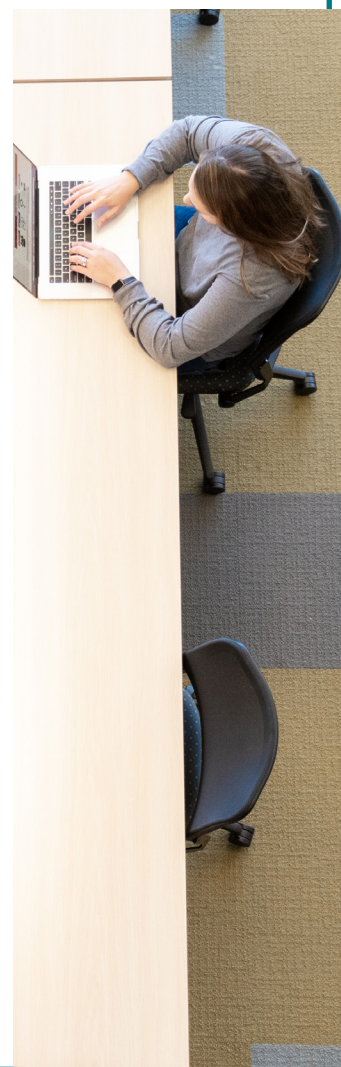
■ LIVE HEARING

The **UNM Hearing Officer (HO)** presides over a live hearing to adjudicate the complaint and determine whether the Respondent's behavior violated UNM policy. The HO reaches a determination by examining the evidence in CEEO's Investigative Report, listening to statements, and applying a **preponderance of the evidence standard**. If the HO finds someone responsible by applying this standard, it means they determined it was more likely than not the person was engaged in the behavior for which they were accused. The Hearing Office notifies both parties in writing about the HO's Final Determination simultaneously.

■ DISMISSALS & WITHDRAWALS

If, at any point, the available evidence shows that the matter does not meet jurisdictional requirements or if the Respondent is no longer affiliated with UNM, CEEO may **dismiss** a complaint. A Complainant may also elect to **withdraw** their complaint at any time.

* CEEO reserves the right to pursue cases that involve severe and pervasive allegations or a threat to the campus community.



■ **RIGHT TO APPEAL**

Either party may appeal a dismissal, final determination, and/or sanction in writing to the Office of the President within seven business days of the date the applicable decision was issued if they believe a conflict of interest, bias, or procedural irregularity affected the outcome. A party may also petition the Board of Regents for an appeal of the President's decision within 10 days after the President's decision is issued.

■ **GENERAL TIMELINES**

CEEO attempts to resolve all reports in a timely manner, and generally concluding investigations within sixty (60) calendar days. However, some investigations may take additional time depending upon the complexity of the claim(s) and other extenuating circumstances (e.g., numerous witnesses, newly discovered evidence, new allegations, good cause extension). In investigations where there is also a criminal investigation being conducted by law enforcement, the CEEO process will run concurrently with such an investigation. CEEO may grant temporary delays reasonably requested by law enforcement for evidence gathering and preservation.

■ **REMEDIES**

Upon a Respondent's finding of responsibility under UAP 2740, the Complainant may also be provided with **remedies** to maintain their equal access to the working and learning environment in addition to supportive measures they may have in place. Remedies can take the form of disciplinary measures for the Respondent.

■ **SANCTIONS**

If the HO determines the Respondent has violated UNM policy, they will coordinate with the most appropriate University office to provide sanctions that are appropriate and consistent with the findings. The sanctioning authority must discuss the disciplinary action with the Title IX Coordinator prior to finalizing the disciplinary action. Someone who is found responsible for a violation of policy involving sexual assault, domestic violence, dating violence, or stalking is subject to any of the following sanctions.

			Faculty Members of United Academics -	
Students	Visitors	Unrepresented Faculty	UNM Units 1 & 2	Unrepresented Staff
<i>Verbal warning</i>	<i>Verbal warning</i>	<i>Warning</i>	<i>Censure</i>	<i>Letter of improvement</i>
<i>Written warning</i>	<i>Written warning</i>	<i>Censure</i>	<i>Suspension without pay</i>	<i>Written warning</i>
<i>Disciplinary probation</i>	<i>Probation</i>	<i>Disciplinary probation</i>	<i>Termination</i>	<i>Suspension</i>
<i>Suspension</i>	<i>Removal from campus</i>	<i>Suspension without pay</i>		<i>Discharge</i>
<i>Expulsion</i>	<i>Barred from campus</i>	<i>Dismissal</i>		
<i>Dismissal from University employment</i>	<i>Denial of admission, readmission, or employment by the University</i>			
<i>Barrment from campus</i>				
Employee Members of United Staff - UNM		Employee Members of UNM Police Officer's Association - Albuquerque	Employee Members of Communications Workers of America	Employee Members of the United Electrical, Radio and Machine Workers of America (United Graduate Workers of UNM)
<i>Letter of improvement</i>	<i>Letter of improvement</i>	<i>Letter of improvement</i>	<i>Written reprimand</i>	
<i>Written warnings/notice</i>	<i>Written reprimand/warning</i>	<i>Written warning</i>	<i>Suspension without pay</i>	
<i>Suspension</i>	<i>Suspension without pay</i>	<i>Suspension</i>	<i>Discharge</i>	
<i>Discharge</i>	<i>Dismissal/Discharge</i>	<i>Discharge</i>		

KNOW YOUR RIGHTS

Upon filing a formal complaint with the University, you have the right to:

- Proceedings that
 - include a prompt, fair, and impartial process from the initial investigation to the final result.
 - are completed within reasonably prompt timeframes as designated by UNM policy, including a process that allows for the extension of timeframes for good cause, with written notice to the accuser and the accused of the delay and the reason for the delay.
 - are conducted in a manner that is consistent with UNM's policies, transparent to the accuser and accused, and by campus officials who:
 - receive, at a minimum, annual training on the issues related to sexual assault, domestic violence, dating violence, and stalking, as well as how to conduct an investigation and hearing process that protects the safety of victims and promotes accountability[^] and
 - do not have a conflict of interest or bias for or against the Complainant or Respondent.[^]
- Timely and equal access to any information that will be used during informal and formal disciplinary meetings and hearings.[^]
- Receive timely notice of meetings at which the accuser or accused, or both, may be present.[^]
- Examine and respond to all evidence gathered by CEEO.[^]
- Be accompanied by others during any institutional disciplinary proceeding, including the opportunity to be accompanied to any related meeting or proceeding by a support person of your choice during the CEEO process—including during the investigatory stage—to help you navigate UNM's administrative processes.^{^^}
- Supportive measures throughout the administrative resolution process.[^]
- Simultaneous, written notification of:
 - the results of any disciplinary proceeding,[^]
 - the right to appeal a decision and the procedures for doing so,[^]
 - any change to the results,[^] and
 - once the results become final.[^]
- Appeal a dismissal, a Hearing Office Final Determination, or accompanying sanction to the Office of the President within seven business days of the date the Hearing Office issues its Final Determination, and to receive notice in writing of the final outcome after the appeal is resolved.[^]

**A support person's role is to assist the party in navigating UNM's administrative processes. Support person roles may vary based upon the specific needs of the party. In the event a CEEO investigation advances to a hearing, the parties are required to have an Advisor of their choice. The Advisor assists the party during the hearing stage, including conducting cross-examination of the opposing party and witnesses.*



SUPPORT SITES FOR STUDENTS

UNM encourages students to consult with a confidential support center on campus who can guide you through your options. The professionals at the sites tagged ✓ **Confidential** below provide safe and welcoming environments on campus and are trained to help you decide how to move forward in a direction of your choosing. **Information you provide to a confidential employee does not generate a formal report, however, they can help you make a report to law enforcement and/or the UNM administration should you wish to report to either one.** Sites tagged ✓ **Supportive Measures** can assist you with requesting, accessing, or requesting changes to supportive and/or protective measures, which are available following a disclosure, regardless of whether you decide to report to law enforcement. Sites with the ✓ **Advocacy** tag also offer free advocacy services and sites with an asterick (*) are available to students at all UNM Branches.

LoboRESPECT Advocacy Center (LRAC)*

The LoboRESPECT Advocacy Center is a place of advocacy, safety, and support for all UNM students.

University Advisement & Enrichment Center (Bldg 85)
400 Cornell Dr NE, Rm 262, Albuquerque, NM 87131
505-277-2911 | loborespect@unm.edu

✓ **Confidential** ✓ **Supportive Measures** ✓ **Advocacy**

Women's Resource Center (WRC)*

The Women's Resource Center is a place of advocacy, safety, and support for all members of UNM and greater community.

Mesa Vista Hall (Bldg 56)
301 Cornell Dr NW, Rm 1160, Albuquerque, NM 87106
505-277-3716 | women@unm.edu

✓ **Confidential** ✓ **Supportive Measures** ✓ **Advocacy**

LGBTQ Resource Center*

The LGBTQ Resource Center offers services and support for LGBTQ+ individuals at UNM.

919 Las Lomas NE (Bldg 168), Albuquerque, NM 87131
505-277-5428 | lgbtqrc@unm.edu

✓ **Confidential** ✓ **Supportive Measures** ✓ **Advocacy**

Ombuds Services*

Ombuds Services is a no-barrier, first-stop for UNM graduate students seeking guidance, information, and insight from a trusted, skilled neutral in a setting that is confidential, independent, and informal.

1800 Las Lomas Blvd NE (Bldg 29), Albuquerque, NM 87106
(SE corner of Buena Vista Rd NE & Las Lomas Blvd NE.
Visits by appointment only.)

505-277-2993 | ombuds@unm.edu

✓ **Confidential**

Vassar House

An extension of the Women's Resource Center, for North Campus students—by appointment only.

917 Vassar Rd NE (Bldg 225), Albuquerque, NM 87106
505-277-3716 | women@unm.edu or
vassarhouse@salud.unm.edu

✓ **Confidential** ✓ **Supportive Measures** ✓ **Advocacy**

Learning Environment Office (LEO)

For students at the UNM Health Sciences Center.

Reginald Heber Fitz Hall (Bldg 211)
2425 Camino De Salud NE, Rm 106, Albuquerque, NM 87106
505-272-7867 | hsc-leo@salud.unm.edu

✓ **Confidential** ✓ **Supportive Measures** ✓ **Advocacy**

Compliance, Ethics & Equal Opportunity (CEEO)*

609 Buena Vista Dr NE (Bldg 42), Albuquerque, NM 87106
505-277-5251 | ceeo@unm.edu

EthicsPoint Hotline: 1-888-899-6092 | unm.ethicspoint.com

TITLE IX Coordinator

Dr. Angela Catena: acatena@unm.edu

✓ **Supportive Measures**

SUPPORTIVE MEASURES FOR STUDENTS

Supportive measures are free, individualized services or adjustments (accommodations) intended to help you maintain your education with minimal interference, to the extent possible. Supportive measures, some of which are protective measures, are non-punitive and held confidential for all parties, so long as maintaining such confidentiality does not impair UNM's ability to provide the supportive measures. Examples include:

- Referrals for mental health or medical services
- Maneuvering campus and law enforcement resources
- Modifications of work or class schedules
- Student financial aid
- Visa and immigration assistance
- Campus escort services
- Mutual restrictions on contact between the parties
- Temporary or permanent changes to a room assignment
- Extra patrols at a Complainant's on-campus residence
- Potentially imposing a temporary ban on the Respondent (offender)
- Creating a safety plan

SUPPORT SITES FOR EMPLOYEES

UNM encourages employees to consult with a confidential reporting site on campus who can guide you through your options. The professionals at the sites labeled ✓ *Confidential* below provide safe and welcoming environments on campus and are trained to help you decide how to move forward in a direction of your choosing. Information you provide to a confidential employee does not generate a formal report, however, they can help you make a report to law enforcement and/or the UNM administration should you wish to report to either one. CEEO's ✓ *Supportive Measures* tag indicates its ability to assist you with requesting, accessing, or requesting changes to supportive and/or protective measures, which are available following a disclosure, regardless of whether you decide to report to law enforcement. Sites with an asterick (*) are available to employees at all UNM Branches.

Counseling, Assistance & Referral Services (CARS)*

1800 Mesa Vista Rd NE (Bldg 184)

Albuquerque, NM 87106

505-277-3136 | cars@unm.edu

✓ *Confidential*

Ombuds Services*

1800 Las Lomas Blvd NE (Bldg 29)

Albuquerque, NM 87106

(SE corner of Buena Vista Rd NE & Las Lomas Blvd NE.

Visits by appointment only.)

505-277-2993 | ombuds@unm.edu

✓ *Confidential*

Compliance, Ethics & Equal Opportunity (CEEEO)*

609 Buena Vista Dr NE (Bldg 42)

Albuquerque, NM 87106

505-277-5251 | ceeo@unm.edu

EthicsPoint Hotline: 1-888-899-6092 | unm.ethicspoint.com

TITLE IX Coordinator

Dr. Angela Catena: acatena@unm.edu

✓ *Supportive Measures*

SUPPORTIVE MEASURES FOR EMPLOYEES

Supportive measures are free, individualized services or adjustments (accommodations) intended to help you maintain your job performance with minimal interference, to the extent possible. Supportive measures, some of which are protective measures, are non-punitive and held confidential for all parties, so long as maintaining such confidentiality does not impair UNM's ability to provide the supportive measures.

Examples include:

- Maneuvering campus and law enforcement resources
- Referrals for mental health or medical services
- Visa and immigration assistance
- Transportation assistance to include campus escort services and parking adjustments
- Mutual restrictions on contact between parties
- Adjustments in the workplace or with scheduling
- Leaves of absence
- Increased security, such as extra patrols
- Potentially imposing a temporary ban on the offender (Respondent)
- Creating a safety plan



ON-CAMPUS RESOURCES

S AVAILABLE TO UNM STUDENTS
E AVAILABLE TO UNM EMPLOYEES

COUNSELING & MENTAL HEALTH

HEALTH & MEDICAL ASSISTANCE

UNM HOSPITAL **S E**

2211 Lomas Blvd NE
Albuquerque, NM 87106
505-272-2111

SANDOVAL REGIONAL MEDICAL CENTER **S E**


3001 Broadmoor Blvd NE
Rio Rancho, NM 87144
505-994-7000

UNM STUDENT HEALTH & COUNSELING (SHAC) **S**

SHAC provides quality health services to all UNM students to foster student success. SHAC is not a provider of emergency medical care. In case of a medical or counseling emergency, dial 911 or go directly to a local hospital emergency room.

300 Cornell Dr NE (Bldg 73)
Albuquerque, NM 87131

Opposite the southeast corner of the SUB.
505-277-3136 | shac@unm.edu

 **After-hours medical:** 505-277-3136, Option #2
On-call service regarding medical needs for UNM students only.

UNM HEALTH GALLUP SPECIALITY CARE CLINIC **S E**

205 Nizhoni Blvd, Ste 3
Gallup, NM 87301
505-925-7505

UNM TELEHEALTH **S**

Partners with services across the University of New Mexico Health System to support and facilitate best practices for clinicians that provide direct patient care.

505-272-iUNM (4866) | UNMTelehealth@salud.unm.edu

UNM ADULT PSYCHIATRIC CENTER **S E**

The state's largest community mental health care provider, UNM Psychiatric Center provides a full spectrum of behavioral health care for thousands of New Mexicans each year, including psychiatric emergency or urgent care.
2600 Marble Ave (Bldg 299)
Albuquerque, NM 87106
505-272-2800

 **24/7 emergency services:** 505-272-2920
Psychiatric urgent care: 505-272-9038

COUNSELING, ASSISTANCE & REFERRAL SERVICES (CARS) **E**

CARS is the Employee Assistance Program for faculty, staff, and retirees of UNM Main and Branch campuses and UNM Health Sciences. CARS provides free and confidential counseling, consultation and referral services to assist with both personal and professional concerns. CARS services are provided in person or via telehealth.

1800 Mesa Vista Rd NE (Bldg 184)
Albuquerque, NM 87106
505-277-3136 | cars@unm.edu



UNM STUDENT HEALTH & COUNSELING (SHAC) **S**

SHAC provides quality counseling services to all UNM students to foster student success.

300 Cornell Dr NE (Bldg 73)
Albuquerque, NM 87131

Opposite the southeast corner of the SUB.
505-277-3136 | shac@unm.edu

 **24/7 Crisis Line:** 505-277-3136, Option 3

TIMELYCARE TELEHEALTH **S**

Free, 24/7 access to virtual care services, self-care, and well-being tools for UNM students. No insurance needed.

Download at the App Store or Google Play.
833-4-TIMELY (833-484-6359)



ON-CAMPUS RESOURCES, CONT.

UNM BEHAVIORAL HEALTH CLINIC **S E**

Help for substance use and mental health conditions.
2600 College Blvd NE
Rio Rancho, NM 87144
505-994-5050

SANDOVAL REGIONAL MEDICAL CENTER (SRMC) BEHAVIORAL HEALTH CLINIC **S E**

Help for substance use and mental health conditions.
3001 Broadmoor Blvd NE
Rio Rancho, NM 87144
505-994-7146

MANZANITA COUNSELING TRAINING CLINIC **S E**

Free counseling open to all UNM community members.
Manzanita Hall (Bldg 70)
600 E University Blvd NE
Albuquerque, NM 87106
505-277-7311 | manzanita@unm.edu

MENTAL HEALTH COLLABORATIVE (MHC) **S**

The Mental Health Collaborative (MHC) is a counseling internship program focused on serving UNM students at various student resource centers.
mhccounseling@unm.edu

Women's Resource Center

505-277-3716 | wrccounseling@unm.edu

El Centro de la Raza

505-277-5020 | elcentrocounseling@unm.edu

Accessibility Resource Center

505-277-3506 | arccounseling@unm.edu

OMBUDS SERVICES **S E**

Though not a counseling center, Ombuds is a no-barrier, first-stop for UNM graduate students and employees seeking guidance, information, and insight from a trusted, skilled neutral in a setting that is confidential, independent, and informal.

1800 Las Lomas Blvd NE (Bldg 29)

Albuquerque, NM 87106

SE corner of Buena Vista Rd NE & Las Lomas Blvd NE.

Visits by appointment only.

505-277-2993 | ombuds@unm.edu

HUMAN RESOURCES **E**

HR provides a wide range of resources for employees, to include short-term job/personal counseling and referrals to outside resources through the Employee Assistance Program (EAP).

John and June Perovich Business Center (Bldg 183)

1700 Lomas Blvd NE

Albuquerque, NM 87131

505-277-6947 | hrfiles@unm.edu

VICTIM/SURVIVOR ADVOCACY



LOBORESPECT ADVOCACY CENTER (LRAC) **S**

A place of confidential advocacy, safety, and support.
University Advisement & Enrichment Center (Bldg 85)
400 Cornell Dr NE, Rm 262
Albuquerque, NM 87131
505-277-2911 | loborespect@unm.edu

WOMEN'S RESOURCE CENTER (WRC) **S**

A place of confidential advocacy, safety, and support.
Mesa Vista Hall (Bldg 56)
301 Cornell Dr NW, Rm 1160
Albuquerque, NM 87106
505-277-3716 | women@unm.edu

VASSAR HOUSE **S**

An extension of the Women's Resource Center, for North Campus students—by appointment only.
917 Vassar Rd NE (Bldg 225)
Albuquerque, NM 87106
vassarhouse@salud.unm.edu

LGBTQ RESOURCE CENTER **S E**

The LGBTQ Resource Center offers services and support for LGBTQ+ individuals at UNM.
919 Las Lomas NE (Bldg 168)
Albuquerque, NM 87131
505-277-5428 | ltqrc@unm.edu

CRISIS HOTLINES



LOBORESPECT ADVOCACY CENTER (LRAC) HOTLINE **S**

On-call service regarding UNM students only
505-277-2911



STUDENT HEALTH AND COUNSELING (SHAC) **S**

Licensed counselors available 24/7.
24/7 Crisis Line: 505-277-3136, Option 3



TIMELYCARE TELEHEALTH **S**

Free, 24/7 access to virtual care services, self-care, and well-being tools for UNM students. No insurance needed.
Download at the App Store or Google Play.
833-4-TIMELY (833-484-6359)



ON-CAMPUS RESOURCES, CONT.

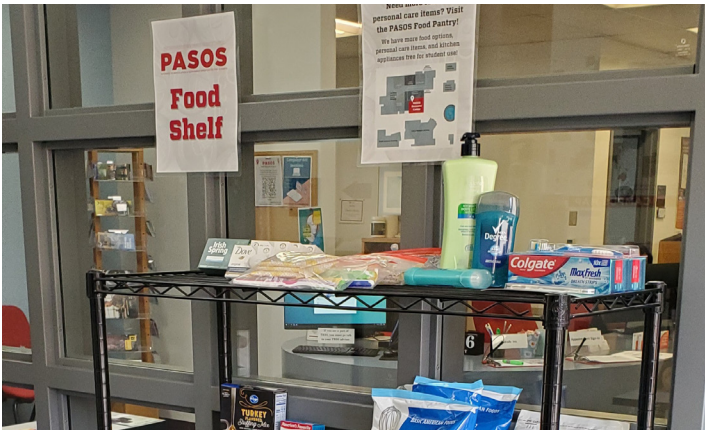
EMERGENCY FOOD & HOUSING

CAMPUS LOBO FOOD PANTRY **S**

Free groceries to all currently enrolled UNM students. Bring your UNM ID or valid ID and UNM ID number, and a bag or box to carry groceries with.

Student Union Building (Bldg 60)
301 Cornell Dr NE, Rm 1093

Located at the first floor across from the computer lab.
Albuquerque, NM 87131
505-277-2911 | loborespect@unm.edu



UNM-VALENCIA CAMPUS FOOD PANTRY **S E**

Fully stocked with quick meals, take-home food, drinks, and hygiene products, all free for students. Kitchen appliances on site.

PASOS Resource Center
Los Lunas, NM 87031

Located in the Learning Resource Center Building directly across from the STEM Center.
505-925-8546 | pasos@unm.edu

UNM-TAOS LOBO FOOD PANTRY **S E**

Stocked with take-home food, snacks, and other necessities. Free for students and family of students. Cabinets are located in front of Fred Peralta Hall (art building on Klauer campus) and at Rio Grande Hall.

Taos, NM 87557
575-737-3697 | chartmen8@unm.edu

LOBORESPECT ADVOCACY CENTER (LRAC HOUSING/SHELTER SERVICES) **S**

Assistance with homeless and low-income student resources, rental assistance, homeowner assistance fund programs, and off-campus housing.

University Advisement & Enrichment Center (Bldg 85)
400 Cornell Dr NE, Rm 262
Albuquerque, NM 87131
505-277-2911 | loborespect@unm.edu

LEGAL ASSISTANCE

LOBORESPECT ADVOCACY CENTER (LRAC) LEGAL AID ASSISTANCE **S**

Legal service referrals for UNM students.

University Advisement & Enrichment Center (Bldg 85)
400 Cornell Dr NE, Rm 262
Albuquerque, NM 87131
505-277-2911 | loborespect@unm.edu

UNM LAW CLINIC **S E**

Direct legal representation to address a broad range of legal issues including housing, domestic violence, immigration status, Kinship Guardianship, Adult Guardianship, custody, and alleged juvenile delinquency provided by UNM School of Law students.

UNM School of Law - Bratton Hall (Bldg 218)
1117 Stanford Dr NE
Albuquerque, NM 87106
505-277-2146

VISA & IMMIGRATION ASSISTANCE

LOBORESPECT ADVOCACY CENTER (LRAC) IMMIGRATION SERVICES **S**

VISA and immigration assistance referrals for UNM students.

University Advisement & Enrichment Center (Bldg 85)
400 Cornell Dr NE, Rm 262
Albuquerque, NM 87131
505-277-2911 | loborespect@unm.edu

UNM LAW CLINIC **S E**

Direct legal representation to address a broad range of issues including housing, domestic violence, immigration status, Kinship Guardianship, custody, and alleged juvenile delinquency provided by UNM School of Law students.

UNM School of Law - Bratton Hall (Bldg 218)
1117 Stanford Dr NE
Albuquerque, NM 87106
505-277-2146



ON-CAMPUS RESOURCES, CONT.

STUDENT FINANCIAL AID

UNM STUDENT FINANCIAL AID

Resources and guidance for UNM students on matters related to financial assistance to include grants, work study, loans, tuition assistance, and scholarships.

UNM One Stop
Mesa Vista Hall (Bldg 56), north side
302 Cornell Dr
Albuquerque, NM 87131
1-800-CALLUNM | 505-277-8900 | onestop@unm.edu

Health Sciences Student Financial Aid Office **S**
Health Sciences Library & Informatics Center (HSLIC)
(Bldg 234)
505-272-2954 | javaldez@salud.unm.edu

School of Law Financial Aid Office **S**
Bratton Hall (Bldg 218)
1117 Stanford Dr NE, Rm 2514
505-277-9035 | financialaid@law.unm.edu

UNM-Gallup Student Financial Aid Office **S**
Student Services and Technology Center (SSTC)
705 Gurley Ave
Gallup, NM 87301
505-863-7601 | gallupfinancialaid@unm.edu

UNM-Valencia Student Financial Aid Office **S**
280 La Entrada Rd
Los Lunas, NM 87031
505-925-8590 | vcfinaancialaid@unm.edu

UNM-Los Alamos Student Financial Aid Office **S**
Student Services Center (Bldg 1), Rm 103
505-662-0341 | jenduran@unm.edu

UNM-Taos Student Financial Aid Office **S**
1157 Co Rd 110
Ranchos De Taos, NM 87557
505-737-6220 | cmarti17@unm.edu

TRANSPORTATION ASSISTANCE & SERVICES

PARKING & TRANSPORTATION SERVICES (PATS) **S E**

Assistance with parking, the UNM Shuttle System, and alternative methods of transportation.

2401 Redondo Dr NE
Albuquerque, NM 87106
Located northeast of the UNM Bookstore.
505-277-1938 | parktran@unm.edu

LOBO BIKE SHOP **S E**

Full-service bike shop with repair and rental services at a discounted price for UNM community members.

UNM Recreational Services
Johnson Center (Bldg 59)
200 Cornell Dr NE
Albuquerque, NM 87131
505-277-0178



2A17 UNM POLICE DEPARTMENT-ALBUQUERQUE **S E**

Offers safety escort services to and from locations on campus and bicycle registration for UNM community members.

Hokona Hall (Bldg 58), west side
2500 Campus Blvd NE
Albuquerque, NM 87131
505-277-2241

2A17 UNM POLICE DEPARTMENT-GALLUP **S E**

Offers safety escort services to and from locations on campus and parking permits for UNM community members.

451 Boardman Dr
Gallup, NM 87301
505-863-9365

2A17 UNM POLICE DEPARTMENT-VALENCIA **S E**

Offers safety escort services to and from locations on campus and parking permits for UNM community members.

280 La Entrada Rd
Los Lunas, NM 87031
505-925-8570

ON-CAMPUS RESOURCES, CONT.

ASSISTANCE FOR PEOPLE WITH DISABILITIES

UNM ACCESSIBILITY RESOURCE CENTER (ARC)

Services, accommodations, and support for students with disabilities in the UNM community.

Mesa Vista Hall (Bldg 56)
301 Cornell Dr NW, Rm 2021
Albuquerque, NM 87131
505-277-3506 | arc@unm.edu

Health Sciences Center ARC **S**

505-277-0316 | kcanomartinez@unm.edu

School of Law ARC **S**

505-277-1188 | bsteplet@unm.edu

UNM-Gallup ARC **S**

505-863-7527 | sarviso2@unm.edu

UNM-Valencia ARC **S**

505-925-8840 | sjclawson@unm.edu

UNM-Los Alamos ARC **S**

505-661-4688 | kaguilar@unm.edu

UNM-Taos ARC **S**

505-737-6251 | rgift@unm.edu

UNM OFFICE OF COMPLIANCE, ETHICS & EQUAL OPPORTUNITY (CEEEO) **E**

Assistance for employees with religious accommodations, Title IX accommodations (pregnancy, lactation) and accommodations for a disability or medical condition under the Americans with Disabilities Act of 1990 (ADA) and the ADA Amendments Act of 2008 (ADAAA).

609 Buena Vista Rd NE (Bldg 42)
Albuquerque, NM 87131
505-277-5251 | ceeo@unm.edu

HOUSING ASSISTANCE

UNM RESIDENCE LIFE & STUDENT HOUSING (RLSH) **S**

Provides and manages UNM's on-campus student housing facilities and assists students with campus life programs.

Student Residence Center Commons (Bldg 89)
2700 Campus Blvd NE
Albuquerque, NM 87106
Located across from La Posada Dining Hall.
housing@unm.edu

 24/7 Help Desk: 505-277-2606

AMERICAN CAMPUS COMMUNITIES (ACC) **S**

Provides and manages on-campus student housing facilities and assists students with campus life programs.

Lobo Village, Located on South Campus.

1200 Avenida César Chávez
Albuquerque, NM 87106
505-925-5575 | lobovillage@americancampus.com

SUPPORT FOR VETERANS

UNM VETERAN & MILITARY RESOURCE CENTER

Services and support for student veterans at UNM.

608 Buena Vista Dr NE (Bldg 20A)

Albuquerque, NM 87131
505-277-3181 | vrc@unm.edu

UNM-Gallup Veterans Resource Center **S**

505-863-7645 | nbrokesh@unm.edu

UNM-Valencia Veterans Resource Center **S**

505-925-8585 | fduran@unm.edu

UNM-Taos Veterans Resource Center **S**

575-737-3771 | mela20@unm.edu

UNM-Los Alamos Veterans Resource Center **S**

505-661-4688 | kaguilar@unm.edu

SUPPORT FOR INTERNATIONAL STUDENTS & EMPLOYEES

UNM INTERNATIONAL STUDENT AND SCHOLAR SERVICES (ISSS) **S E**

Assistance with navigating life for international students and employees studying and working at UNM.

Global Education Office (GEO)
Mesa Vista Hall (Bldg 56)
301 Cornell Dr NW, Rm 2120
Albuquerque, NM 87131
505-277-4032 | geo@unm.edu



ON-CAMPUS RESOURCES, CONT.

AUXILIARY SAFETY SERVICES

UNM SECURITY **S E**

Non-sworn Campus Security Officers provide safety escort services, motor assist, and key assist on UNM's Main Campus.

Hokona Hall (Bldg 58), west side

2500 Campus Blvd NE

Albuquerque, NM 87131

505-277-6059

Emergency Dispatch: 505-277-2241

UNM HOSPITAL SECURITY (NORTH CAMPUS) **S E**

Non-sworn Security Officers provide safety escort services, motor assist, and key assist on UNM's North Campus.

UNM Hospital

2211 Lomas Blvd NE

Albuquerque, NM 87106

505-272-2160

UNM SANDOVAL REGIONAL MEDICAL CENTER (SRMC) SECURITY **S E**

Non-sworn Security Officers perform patrols and provide safety escort services and other assistance to students, employees, and visitors at UNM's Rio Rancho Health Sciences Campus.

UNM Sandoval Regional Medical Center

3001 Broadmoor Blvd NE

Rio Rancho, NM 87144

505-980-1516

UNM STUDENT SAFETY **S**

Assists students with safety concerns in student housing.

Student Residence Center Commons (Bldg 89)

2700 Campus Blvd NE

Albuquerque, NM 87106

Located across from La Posada Dining Hall.

housing@unm.edu

 **24/7 Help Desk:** 505-277-2606

UNM-TAOS: HIGH DESERT SECURITY PATROL (HDSP) **S E**

Non-sworn Security Officers perform patrols and provide safety escort services and other assistance to the UNM-Taos community.

1157 Co Rd 110

Ranchos De Taos, NM 87557

575-758-1450

For police assistance or in cases of emergency, contact one of the agencies listed on page 4 of this Guide.





COMMUNITY RESOURCES




NEW MEXICO COALITION OF SEXUAL ASSAULT PROGRAMS, INC (NMCSAP)

Sexual Assault Nurse Examiner (SANE) Programs provide medical/forensic exams for individuals who have been sexually assaulted. SANE services include a physical assessment, emergency contraception, injury documentation, forensic photography, and evidence collection up to five days after the sexual assault. SANE Programs offer medication for sexually transmitted infections (STI) up to 30 days after the assault. Services are available 24 hours a day, provided at no cost, and are confidential. No ID is required. Individuals can receive a SANE exam without filing a police report. Each SANE Program has a designated Coordinator who is active with their community co-responders and are available to assist with problems, questions, or presentations.


 **Alamogordo:** Southern NM Wellness Alliance
Alamogordo, NM 88310
24/7 Dispatch: 575-430-9485


 **Albuquerque:** Albuquerque Sexual Assault Nurse Examiner (SANE) Collaborative
625 Silver Ave SW, 2nd Flr
Albuquerque, NM 87102
UNMPD can provide transportation, even if you do not want to file a police report!
24/7 Dispatch: 505-884-SANE (7263)


 **Carlsbad:** SPEAK SANE/DV Exam Services
Cavern City CAC
1313 W Mermod St
Carlsbad, NM 88220
24/7 Dispatch: 575-303-7070


 **Los Lunas:** Valencia Shelter Services Satellite SANE
445 Camino Del Rey SW, Ste B
Los Lunas, NM 87031
UNMVPD can provide transportation, even if you do not want to file a police report!
24/7 Dispatch: 505-864-1283

 **Farmington:** Sexual Assault Services of Northwest NM
622 W Maple St, Ste F
Farmington, NM 87401
24/7 Dispatch: 505-325-2805


 **Gallup:** Sexual Assault Services of Northwest New Mexico (SASNWNM-Gallup)
111 S 1st St
Gallup, NM 87301
505-399-5940
UNMGPD can provide transportation, even if you do not want to file a police report!
24/7 Dispatch: 866-908-4700


 **Hobbs:** The Phoenix House Hobbs SANE
221 E Green Acres Dr
Hobbs, NM 88240
24/7 Dispatch: 575-433-3322


 **Las Cruces:** Las Cruces La Piñon SANE Project
Memorial Medical Center
2450 S Telshorb Blvd
Las Cruces, NM 88011
24/7 Dispatch: 888-595-7273

 **Portales:** Arise Sexual Assault Services
801 W 18th St
Portales, NM 88130
24/7 Dispatch: 575-226-7263

 **Roswell:** I Can Survive Roswell Refuge SANE Project
1215 N Garden Ave
Roswell, NM 88201
24/7 Dispatch: 575-627-8361

 **Santa Fe:** Christus St. Vincent Regional Medical Center SANE Program
Solace Sexual Assault Services
6601 Valentine Wy
Santa Fe, NM 87507
24/7 Dispatch: 505-989-5952

 **Silver City:** Silver Regional Sexual Assault Support Services and SANE
La Clínica
3201 N Ridge Loop Dr
Silver City, NM 88061
24/7 Dispatch: 866-750-6474

 **Taos:** Taos/Holy Cross Hospital SANE Program
Holy Cross Medical Center
1397 Weimer Rd
Taos, NM 87571
24/7 Dispatch: 575-751-8990

COMMUNITY RESOURCES, CONT.

HEALTH & MEDICAL ASSISTANCE



PRESBYTERIAN HOSPITAL

1100 Central Ave SE
Albuquerque, NM 87106
505-841-1234

VETERAN AFFAIRS HEALTH CARE

1501 San Pedro Dr SE
Albuquerque, NM 87108
505-265-1711

Mental Health Care: 505-265-1711, Ext. 2150

TRINITY URGENT CARE

1460 Trinity Dr, Ste A
Los Alamos, NM 87544
505-412-6033

MEDICAL ASSOCIATES OF NORTHERN NM (MANNM) / WALK-IN CLINIC

3917 West Rd, #A
Los Alamos, NM 87544
505-661-8900

REHOBOTH MCKINLEY CHRISTIAN HEALTH CARE SERVICES EMERGENCY ROOM

1901 Redrock Dr
Gallup, NM 87301
505-863-7141

GALLUP INDIAN MEDICAL CENTER

A 99-bed hospital located on the border of the Navajo Reservation.

516 E Nizhoni Blvd
Gallup, NM 87301
505-722-1000



24/7 Nurse Advice Line: 505-985-5206

HIROSHI "HERSHEY" MIYAMURA VA CLINIC

U.S. Department of Veterans Affairs (VA) outpatient primary and specialty health care services for Gallup's Veteran community.

2075 S NM Hwy 602
Gallup, NM 87301
505-722-7234

Mental Health Care: 505-265-1711, Ext. 2150

QUESTA HEALTH CENTER

Offers medical and dental support for individuals and families and also offers Medically Assisted Therapy.

2573 NM-22
Questa, NM 87556
575-586-0315

COUNSELING & MENTAL HEALTH

ALBUQUERQUE VET CENTER

Confidential help for Veterans, service members, and their families at no cost in a non-medical setting. Services include counseling for needs such as depression, post traumatic stress disorder (PTSD), and the psychological effects of military sexual trauma (MST).

2001 Mountain Rd NW
Albuquerque, NM 87104
505-346-6562



24/7 Call Center: 877-927-8387

ALBUQUERQUE CENTER FOR HOPE & RECOVERY PEER- RUN DROP-IN CENTER

Support for people who live with mental health or co-occurring mental health and substance use challenges.

913 2nd St NW
Albuquerque, NM 87102
505-246-2247

ALBUQUERQUE INDIAN CENTER

Provides substance abuse, family and couples' therapy, and mental health assessments.

105 Texas St SE
Albuquerque, NM 87108
505-268-1751 | abqindiancenter@gmail.com

NEW MEXICO SOLUTIONS

Comprehensive Behavioral Health Services in New Mexico specializing in a variety of services for children, adolescents, adults and their family members/life partners.

707 Broadway Blvd NE, Ste 500
Albuquerque, NM 87102
505-268-0701

2551 Coors Blvd NW
Albuquerque, NM 87102
505-833-2300



Crisis Line: 800-433-7291



COMMUNITY RESOURCES, CONT.

VALENCIA SHELTER SERVICES

Provides trauma-informed, individual and group therapy for children, teens, and adults. Bi-lingual services available.

Administrative Offices

445 Camino Del Rey Dr, Ste E

Los Lunas, NM 87031

505-864-1283 | referrals@valenciashelterservices.org

GALLUP FAMILY COUNSELING

A wide range of therapy and treatment options for mental health and substance use disorders, medication evaluation and management, and crisis intervention offered by Presbyterian Medical Services (PMS).

2025 E Aztec Ave

Gallup, NM 87301

505-863-3828

CITY OF GALLUP BEHAVIORAL HEALTH

Outpatient Therapy services provided by Certified Substance Abuse Counselors as well as a High-Risk Unit designed to provide medically complex patient triage.

230 S 2nd St

Gallup, NM 87301

505-863-1220

LOS ALAMOS FAMILY COUNCIL

Offers a full menu of psychiatric evaluation, diagnosis, medication and symptom management as well as a variety of counseling services.

Administration & Counseling Center

1250 Central Ave, Ste 102

Los Alamos, NM 87544

505-662-4160



CRISIS CENTER OF NORTHERN NEW MEXICO (CCNNM)

CCNNM is the only domestic violence shelter in Rio Arriba providing 24/7 shelter, crisis intervention, counseling, skills and knowledge groups, case management, and legal advocacy for survivors of domestic abuse from Rio Arriba, Los Alamos, Santa Fe County, and eight Northern Pueblos. CCNNM also works with people who identify as Lesbian, Gay, Bisexual, Transgender and Intersex.

505-753-1656 | ccnnm@crisis-centers.org

NATIONAL ALLIANCE ON MENTAL ILLNESS SANTA FE

A volunteer-based local chapter of NAMI that connects individuals to mental health support.

313 Camino Alire, #307

Santa Fe, NM 87501

505-395-6204 | info@namisantafe.org

TEAMBUILDERS BEHAVIORAL HEALTH

Serves adults, children, adolescents, and families.

Santa Fe - Corporate Headquarters

2504 Camino Entrada

Santa Fe, NM 87507

505-216-2727

Bernalillo

301 South Camino del Pueblo

Bernalillo, NM 87004

505-404-6907

Clayton

834 Main St

Clayton, NM 88415

575-729-1953

Los Lunas

428 Los Lentos Rd SE, Ste 3

Los Lunas, NM 87031

505-865-4739

Raton

101 Letton Dr

Raton, NM 87740

575-347-1190

Santa Rosa

501 S 4th St

Santa Rosa, NM 88435

505-384-0220

Taos

920 Salazar Rd, Ste C

Taos, NM 87571

575-751-7037

COMMUNITY AGAINST VIOLENCE

Provides free and confidential counseling, support groups, and information and resources for those in need. Community Against Violence is the only agency in Taos County that works solely with survivors of domestic and sexual violence.

945 Salazar Rd

Taos, NM 87571

575-758-8082 or 888-758-8082



24/7 HelpLine: 575-758-9888 | Textline: 575-770-2706

COMMUNITY RESOURCES, CONT.

EL CENTRO FAMILY HEALTH

Offers behavioral health support in Taos, Penasco, and Embudo.

Taos Clinic

1331 Gusdorf Rd
Taos, NM 87571
575-758-3601

Embudo Clinic

2243 NM-68
Embudo, NM 87531
505-579-4255

Peñasco Clinic

State Rd 75 #15136
Peñasco, NM 87553
575-587-1944

TAOS BEHAVIORAL HEALTH

In-person and online counseling support for individuals, couples, families, or groups.

105 Bertha St, Ste B
Taos, NM 87571
575-758-4297 | info@taosbehavioralhealth.org

QUESTA HEALTH CENTER

Offers behavioral health support for individuals and families and also offers Medically Assisted Therapy.

2573 NM-22
Questa, NM 87556
575-586-0315

VICTIM/SURVIVOR ADVOCACY



RAPE CRISIS CENTER OF CENTRAL NEW MEXICO

Free, confidential services providing a 24-hour hotline for survivors of domestic violence, sexual assault, and sex trafficking.

9741 Candelaria Rd NE
Albuquerque, NM 87112
505-266-7711 | info@rapecrisisnm.org

ALBUQUERQUE FAMILY ADVOCACY CENTER

Provides victims of domestic violence, child abuse, sexual assault and their families with a safe setting to assist in addressing and overcoming the trauma of their experience and break the cycle of violence that destroys families.

625 Silver Ave SW, #2
Albuquerque, NM 87102
505-243-2333



HAVEN HOUSE CRISIS LINE

Assistance with temporary restraining orders (TROs), emergency shelter, information about navigating the court system, accompanying Survivors to court hearings, and referrals to legal assistance; i.e., Legal Aid, Attorneys, etc.
505-896-4869

NM COALITION AGAINST DOMESTIC VIOLENCE

Support and assistance with domestic violence programs across the state.

2425 Alamo Ave SE
Albuquerque, NM 87106
505-246-9240 or 800-799-7233



CRISIS CENTER OF NORTHERN NEW MEXICO (CCNNM)

CCNNM is the only domestic violence shelter in Rio Arriba providing 24/7 shelter, crisis intervention, counseling, skills and knowledge groups, case management, and legal advocacy for survivors of domestic abuse from Rio Arriba, Los Alamos, Santa Fe County, and eight Northern Pueblos. CCNNM also works with people who identify as Lesbian, Gay, Bisexual, Transgender and Intersex.

505-753-1656 | ccnm@crisis-centers.org

TRANSGENDER RESOURCE CENTER OF NM

Supports transgender, nonbinary, and gender nonconforming communities through direct services, education, and advocacy.

5600 Domingo Rd NE
Albuquerque, NM 87108
505-200-9086 | tgrcnm@tgrcnm.org

CASA FORTALEZA

Free counseling and services to survivors of sexual violence and their family and friends.

Provee consejería y servicios gratuitos para sobrevivientes de violencia sexual y sus familiares y/o amigos.

2340 Alamo Ave SE, Ste 124
Albuquerque, NM 87106
505-910-4031

COMMUNITY RESOURCES, CONT.

ENLACE COMUNITARIO

Intervention, prevention and counseling services for victims of domestic violence.

Servicios de intervención, prevención y asesoramiento para víctimas de violencia doméstica.

2425 Alamo Ave SE
Albuquerque, NM 87106
505-246-8972

NEW MEXICO ASIAN FAMILY CENTER

Counseling and case management services, survivor led and centered services, programs centering traditional methods of healing, youth and community leadership programs, financial education workshops, cross-racial movement building, and civic engagement work.

505-717-2877

Mọi thắc mắc xin liên hệ: 505-934-5139

ご不明な点がございましたら: 505-934-5686

如果您有疑问: 505-526-8644

اگر شہما ہر ہنوںگ اوسل: 4345-934-505

BATTERED FAMILIES SERVICES, INC.

Provides emergency shelter for families who are in immediate threat and in need of safety and safety planning for families in need of safety guidelines.

207 S Strong Dr
Gallup, NM 87301

 24/7 Crisis Line: 505-722-7483


COMMUNITY AGAINST VIOLENCE

Provides free and confidential legal and medical advocacy services and information and resources for those in need.

Community Against Violence is the only agency in Taos County that works solely with survivors of domestic and sexual violence.

945 Salazar Rd
Taos, NM 87571

575-758-8082 or 888-758-8082

 24/7 HelpLine: 575-758-9888 | Textline: 575-770-2706

VALENCIA SHELTER SERVICES

Assists individuals seeking immediate support in accessing shelter and other resources they may need.

505-864-1383

HEALTHCARE WORKER & FIRST RESPONDER SUPPORT LINE

Support line specifically for healthcare workers and first responders.

1-855-507-5509

ALBUQUERQUE VET CENTER

Confidential help for Veterans, service members, and their families at no cost in a non-medical setting. Services include counseling for needs such as depression, post traumatic stress disorder (PTSD), and the psychological effects of military sexual trauma (MST).

877-927-8387

PEER TO PEER WARMLINE

If you or a loved one wants to talk to someone that has been there, professional peers support workers are here to talk with you.

1-855-4NM-7100 (1-855-466-7100)

NATIONAL DOMESTIC VIOLENCE HOTLINE

24/7/365 compassionate support, crisis intervention information, educational services, and referral services in more than 200 languages.

1-800-799-SAFE (7233)

NATIONAL HUMAN TRAFFICKING HOTLINE

Social and legal services for victims and survivors of human trafficking.

1-888-373-7888

RAINN: NATIONAL SEXUAL ASSAULT HOTLINE

The RAINN (Rape, Abuse & Incest National Network) anti-sexual violence organization operates the DoD Safe Helpline for the Department of Defense and carries out initiatives to prevent sexual violence, help survivors, and ensure that perpetrators are brought to justice.

1-888-656-HOPE (4673)

CRISIS HOTLINES

AGORA CRISIS CENTER HOTLINE

Immediate assistance and referrals for those in crisis.

505-277-3013

NATIONAL SUICIDE & CRISIS LIFELINE

A centralized, single telephone number to get immediate assistance and resources for mental health and substance use issues.

988 or 1-855-NMCrisis (855-662-7474) or
855-227-5485 (TTY)



COMMUNITY RESOURCES, CONT.

VETERAN CRISIS LINE

For veterans having thoughts of self-harm, or of harming others.

1-800-273-8255, Option 1 or Text 838255

LIFELINE FOR VETS

Crisis management and support for veterans in need, provided by the National Veterans Foundation.

888-777-4443

HOMELESSNESS HOTLINE

Crisis line for veterans who are currently experiencing homelessness or at risk of homelessness. Family members and supports of veterans at risk can also call.

877-424-3838

TRANS LIFELINE

Provides direct, peer emotional and financial support to trans people in crisis. Available 7am-1am PST daily.

877-565-8860

LOS ALAMOS MENTAL HEALTH ACCESS PROJECT

Free, confidential, support from volunteer crisis counselors.

855-662-7474 or text "start" to 741-741

LOS ALAMOS FAMILY COUNCIL

Offers a full menu of psychiatric evaluation, diagnosis, medication and symptom management as well as a variety of counseling services.

505-820-6333

COMMUNITY AGAINST VIOLENCE

The only agency in Taos County that works solely with survivors of domestic and sexual violence.

575-758-9888 or text 575-770-2706

EMERGENCY FOOD & HOUSING

ROADRUNNER FOOD BANK OF NEW MEXICO

Provides food distribution services throughout New Mexico through food pantries, soup kitchens, group homes, shelters, schools, senior centers, low-income senior housing locations, and health care partners.

505-349-5340 or 505-523-4390

BELEN AREA FOOD PANTRY

Distributes food boxes to families in need. Must live in the Belen School District. ID required.

201 S 3rd St

Belen, NM 87002

505-966-2567 | info@fbcbelen.net

GALLUP COMMUNITY PANTRY

Free produce, emergency food boxes, food for kids, mobile pantry deliveries, and resources for seniors.

1130 Hasler Valley Rd

Gallup, NM 87301

505-726-8068 | coo@thecommunitypantry.org

HOZHO CENTER FOR PERSONAL ENHANCEMENT

Drop-in center and postal services for the unhoused.

216 W Maloney Ave

Gallup, NM 87301

505-870-1483 | hozhocenter@gmail.com

BIENVENIDOS FOOD PANTRY

Provides food and clothing to those in need in Santa Fe and the surrounding area.

1511 5th St

Santa Fe, NM 87505

505-986-0583 | director@bienvenidosfoodpantry.org

THE FOOD DEPOT

Drive-thru food pantry and food distribution at locations throughout Northern New Mexico.

1222 A Siler Rd

Santa Fe, NM 87507

505-471-2025 | info@thefooddepot.org

LA CARES

Provides a food pantry and rent and utility assistance to residents of Los Alamos County.

Bethlehem Evangelical Lutheran Church

2390 North Rd

Los Alamos, NM 87544

505-661-8015

LA JICARITA FOOD BASKET

Provides emergency food boxes.

14136 NM-75

Peñasco, NM 87553

505-480-3846

NORTH CENTRAL FOOD PANTRY

Free food for anyone in the Questa community and surrounding areas within the state of New Mexico, regardless of income.

140 Embargo Rd

Questa, NM 87556

575-586-0486 | taosfoodpantry@gmail.com

THE GIVING TREE

Monthly food distribution.

Taos, NM 87571

505-980-3887 | taoshope@gmail.com

COMMUNITY RESOURCES, CONT.

ST JAMES EPISCOPAL CHURCH FOOD PANTRY

Free food for anyone in the Questa community and surrounding areas within the state of New Mexico regardless of income.

208 Camino de Santiago

Taos, NM 87571

575-758-2790 | wrmesquire2@gmail.com

OUR LADY OF GUADALUPE

Free food baskets.

205 Don Fernando St

Taos, NM 87571

575-758-9208 | olgtaos@yahoo.com



HELEN'S HOUSING - ER DOMESTIC VIOLENCE/SEXUAL ASSAULT SHELTER

An 18-bed emergency domestic violence and sexual assault shelter for women and their children that are fleeing domestic violence. Shelter services include a safe place to sleep, healthy meals, individual and group counseling, weekly goal support, on site advocacy, clothing, laundry facility, limited transportation, and referral to other services as needed. Helen's Housing also offers services to help males by assisting them with a hotel stay.

Administrative Offices

445 Camino Del Rey Dr, Ste E

Los Lunas, NM 87031

505-864-1283 | referrals@valenciashelterservices.org



CRISIS CENTER OF NORTHERN NM (CCNNM)

CCNNM is the only domestic violence shelter in Rio Arriba providing 24/7 shelter, crisis intervention, counseling, skills and knowledge groups, case management, and legal advocacy for survivors of domestic abuse from Rio Arriba, Los Alamos, Santa Fe County, and eight Northern Pueblos. CCNNM also works with people who identify as Lesbian, Gay, Bisexual, Transgender and Intersex.

505-753-1656 | ccnnm@crisis-centers.org



ST ELIZABETH SHELTERS & SUPPORTIVE HOUSING

Assists homeless individuals and families by providing emergency shelter, food, case management, counseling, supportive housing, and referrals to partnering human-service agencies.

Men's Emergency Shelter

804 Alarid St

Santa Fe, NM 87507

505-982-6611

Casa Familia

1604 Berry Ave

Santa Fe, NM 87505

505-983-2042

Casa Cerrillos

1905 Siringo Rd

Santa Fe, NM 87505

505-471-3456

Sonrisa

6321 Jaguar Dr

Santa Fe, NM 87507

505-424-6973

Santa Fe Suites

3007 S St Francis Dr

Santa Fe, NM 87505

505-982-1154



STATEWIDE HOMELESS RESOURCE HELPLINE

Provides resources and referrals related to homelessness.

505-768-HELP (4357) or text 505-600-2835

768-help@nmceh.org



WESTSIDE EMERGENCY HOUSING CENTER

A safe and welcoming environment for men and women experiencing homelessness in Albuquerque. The center is open year-round and offers meals. Shuttle service is provided daily.

7440 Jim McDowell Rd NW

Albuquerque, NM 87121

505-839-9193



ESPERANZA SHELTER DOMESTIC ABUSE SERVICES

24 hour crisis hotline. Safe, confidential housing, counseling, food, clothing and supplies for you—and your children, if you have kids.

Línea directa de crisis las 24 horas. Vivienda segura y confidencial, asesoramiento, alimentos, ropa y suministros, para usted—y sus hijos, si tiene hijos.

505-474-5536

Crisis Hotline: 505-473-5200 or 800-473-5220



HAVEN HOUSE

Shelter for victims of domestic violence and their children in Rio Rancho.

505-896-4869

Crisis Line: 505-896-4869

COMMUNITY RESOURCES, CONT.


COMMUNITY AGAINST VIOLENCE

Free and confidential emergency shelter for adults and children, and short end long-term transitional housing programs. Community Against Violence is the only agency in Taos County that works solely with survivors of domestic and sexual violence and is the only domestic violence shelter in Taos County.

945 Salazar Rd

Taos, NM 87571

575-758-8082 or 888-758-8082

 24/7 HelpLine: 575-758-9888 | Textline: 575-770-2706

LEGAL ASSISTANCE

NEW MEXICO LEGAL AID

Free services to eligible low-income New Mexico residents with civil (non-criminal) matters.

505 Marquette Ave NE

Albuquerque, NM 87102

Business phone: 1-866-416-1992

For legal help: 1-833-LGL-HELP (1-833-545-4357)

Domestic Violence Legal Aid Helpline: 1-877-974-3400

VOLUNTEER ATTORNEY PROGRAM: FAMILY LAW CLINIC

Attorneys provide free legal information on family law issues, including Divorce, Child Support, Custody, Visitation, Mediation, Paternity, Kinship/Guardianship, Domestic Violence, Adoption, and Settlement Facilitation. The Clinic takes place the third Wednesday of each month from 10am until 1pm in the third-floor conference room of the 2nd Judicial District Court. Pre-registration is required and attendance is limited.

400 Lomas Blvd NW

Albuquerque, NM 87102

1-877-266-9861

VALENCIA SHELTER SERVICES

Support with filing restraining orders, court preparation, and court attendance.

Administrative Offices

445 Camino Del Rey Dr, Ste E

Los Lunas, NM 87031

505-864-1283 | referrals@valenciashelterservices.org

VISA & IMMIGRATION ASSISTANCE

NEW MEXICO IMMIGRANT LAW CENTER

High-quality legal representation accessible to low-income immigrant communities.

625 Silver Ave SW, Ste 410

Albuquerque, NM 87102

505-247-1023

CATHOLIC CHARITIES VAVW IMMIGRATION PROJECT

Provides educational and career programs for the many refugee families that have resettled in Albuquerque after the 90-day government resettlement program.

2010 Bridge Blvd SW

Albuquerque, NM 87105

505-724-4670 | info@ccasfnm.org

CASA REINA SISTERS OF OUR LADY OF GUADALUPE & ST JOSEPH (GALLUP OFFICE)

Assist in paralegal and immigration matters.

Ayuda en asuntos de asistente legal e inmigración.

505-722-5511

STUDENT FINANCIAL AID

U.S. DEPARTMENT OF EDUCATION FEDERAL STUDENT AID

Assistance with forms and processes related to federal student aid, credit counseling, and loan repayments and forgiveness.

1-800-433-3243

TRANSPORTATION ASSISTANCE & SERVICES

ABQ RIDE

Provides transportation services for the Albuquerque Metropolitan Area, to include Albuquerque Rapid Transit (ART) and bus service.

505-243-RIDE (7433)

ABQ RIDE SUNVAN PARATRANSIT SERVICE

Curb-to-curb accessible transportation to persons residing in or visiting the Albuquerque metro area whose impairment makes it impossible to ride the fixed route service.

505-243-RIDE (7433)

RIO METRO BUS

Fare-free bus rides connecting communities throughout Valencia County.

1-866-795-RAIL (7245) or 505-352-3595



COMMUNITY RESOURCES, CONT.

RIO METRO DIAL-A-RIDE

Fare-free rides connecting the general public, including seniors and people with disabilities. Call to request a ride.

Rio Rancho/Corrales: 505-404-2063 (Weekdays only.)

Valencia County: 505-352-3595 (Weekends only.)

Pueblo of Isleta: 505-352-3595 (Weekdays only.)

NAVAJO TRANSIT SYSTEM

Bus routes throughout the Navajo Nation.

928-729-4002 | navajotransit@outlook.com

GALLUP EXPRESS

Provides local transportation in Gallup and Zuni, as well as intercity service between the two towns.

505-243-RIDE (7433)

ATOMIC CITY TRANSIT

Free public transportation in Los Alamos and White Rock.

505-661-RIDE (7433) | atomiccitytransit@lacnm.us

NORTH CENTRAL REGIONAL TRANSIT DISTRICT (RTD)

Provides free and premium fare-based bus transit connecting communities and pueblos throughout the counties of north central New Mexico including Los Alamos, Rio Arriba, Santa Fe, and Taos.

505-629-4725 | info@ncrtd.org

ASSISTANCE FOR PEOPLE WITH DISABILITIES

AGING AND DISABILITY RESOURCE CENTER (ADRC) OF NEW MEXICO

Assistance for elders, persons with disabilities, and caregivers to find services and resources to help them live well and independently.

2550 Cerrillos Rd

Santa Fe, NM 87505

1-800-432-2080

HUMAN SERVICES DEPARTMENT OF NEW MEXICO

Cash assistance to dependent, needy children and disabled adults who are not eligible for other cash assistance programs.

Bernalillo County Field Office

1041 Lambertson Pl NE

Albuquerque, NM 87110

1-800-283-4465

McKinley County Field Office

3006 E Hwy 66

Gallup, NM 87301

1-800-283-4465

RIO METRO DIAL-A-RIDE

Fare-free rides connecting the general public, including seniors and people with disabilities. Call to request a ride.

Rio Rancho/Corrales: 505-404-2063 (Weekdays only.)

Valencia County: 505-352-3595 (Weekends only.)

Pueblo of Isleta: 505-352-3595 (Weekdays only.)

ATOMIC CITY TRANSIT ACT ASSIST

A service for persons whose disability prevents them using riding Atomic City Transit which provides free public transportation in Los Alamos and White Rock. Passengers with disabilities may request modifications to current service procedures to access the service.

505-661-RIDE (7433) | atomiccitytransit@lacnm.us

NORTH CENTRAL REGIONAL TRANSIT DISTRICT (RTD) ADA PARATRANSIT SERVICE

A service for persons whose disability prevents them using riding fixed-route buses in Española. Passengers with disabilities may request modifications to current service procedures to access the service.

866-206-0754 | info@ncrtd.org

HOUSING ASSISTANCE

U.S. DEPARTMENT OF HOUSING AND URBAN DEVELOPMENT (HUD)

Provides assistance with homeownership and homebuying, rent, avoiding foreclosure, and homelessness.

Albuquerque Field Office

Dennis Chavez Federal Building

500 Gold Ave SW, 7th Floor, Ste 7301

Albuquerque, NM 87103

505-346-6463

ALBUQUERQUE HOUSING AUTHORITY

Provides quality housing for those with limited incomes.

1840 University Blvd SE

Albuquerque, NM 87106

505-764-3920

GALLUP HOUSING AUTHORITY

Provides quality housing for those with limited incomes.

203 Debra Dr

Gallup, NM 87301

505-722-4388

LOS ALAMOS HOUSING PARTNERSHIP INC.

Assists households in purchasing homes in Los Alamos County and assists homeowners in Los Alamos County.

1362 Trinity Dr, Ste C1

Los Alamos, NM 87544

505-662-8918

cindylahp@gmail.com or stevelahp@gmail.com

COMMUNITY RESOURCES, CONT.



HABITAT FOR HUMANITY

Assists individuals and families with finding affordable housing.

HFH of Hobbs, NM Area

575-397-4398 | director@hobbshabitat.org

White Sands HFH

575-437-6562 | ktaiaroa@whitesandshabitat.org

Greater Albuquerque HFH

505-265-0057 | info@habitatbq.org

HFH- Espanola Valley & Los Alamos

505-747-2690 | director@habitatevla.org

Tres Rios HFH

505-326-5379 | habitatsanjuan@gmail.com

Mesilla Valley HFH

575-525-0475 | director@lascruceshabitat.org

Habitat for Humanity of Roosevelt & Curry Counties

575-359-1344 | marge.rhode@habitatrcc.org

Santa Fe HFH

505-986-5880 | info@santafehabitat.org

HFH of Taos

575-758-7827 | kevin@taoshabitat.org

SUPPORT FOR VETERANS



MILITARY ONESOURCE

Defense Department-funded program providing 24/7 connection to information, answers, and support to help with tax services, spouse employment, webinars and online training, relocation and deployment tools, and much more.
800-342-9647

CITY OF ALBUQUERQUE OFFICE OF MILITARY AND VETERANS AFFAIRS

Connect with resources, contact the Mayor's Office, and stay up-to-date on the issues that matter to our veterans and military service members and their families.

Dennis Chavez Federal Building
500 Gold Ave SW
Albuquerque, NM 87102
505-768-3000

ALBUQUERQUE VET CENTER

Confidential help for Veterans, service members, and their families at no cost in a non-medical setting. Our services include counseling for needs such as depression, post traumatic stress disorder (PTSD), and the psychological effects of military sexual trauma (MST).

2001 Mountain Rd NW
Albuquerque, NM 87104
505-346-6562



24/7 Call Center: 877-927-8387

HIROSHI "HERSHEY" MIYAMURA VA CLINIC

U.S. Department of Veterans Affairs clinic that provides primary and specialty health care services, including telehealth (mental health), heart monitoring, social work, women's health, EKG, and more.

2075 S NM Hwy 602
Gallup, NM 87301
505-722-7234

Mental Health Care: 505-265-1711, Ext. 2150

SUPPORT FOR INTERNATIONAL STUDENTS

INTERNATIONAL STUDENTS, INC. (ISI)

Free airport pickup, temporary home-stay, apartment-finding help, and friendship.

401 University Blvd NE
Albuquerque, NM 87106
BSU/Christian Challenge Building
isiabq@isionline.org

AUXILIARY SAFETY ASSISTANCE



ALBUQUERQUE COMMUNITY SAFETY (ACS)

Non-emergencies: 311

For police assistance or in cases of emergency, contact one of the agencies listed on page 4 of this Guide.

IMPORTANT DEFINITIONS

This section provides a list of definitions for **sexual assault**, **domestic violence**, **dating violence**, **stalking**, and **consent** as set forth by the:



2013 Reauthorization of the Violence Against Women Act (VAWA) amendments to the Clery Act, which UNM uses in its **campus disciplinary process** pursuant to University Administrative Policies (UAPs) 2720, 2740, and 2745 and the



State of New Mexico, which law enforcement uses to pursue charges against an offender in the criminal justice system. Knowing the State of New Mexico laws pertaining to VAWA crimes is useful for helping you understand your options should you choose to pursue charges through the criminal justice system. UNM encourages anyone who experiences sexual assault, domestic violence, dating violence, stalking, or related misconduct or stalking and wishes to pursue criminal charges to discuss their full list of options with a law enforcement official and/or an attorney.

SEXUAL OFFENSE DEFINITIONS



VIOLENCE AGAINST WOMEN ACT DEFINITIONS OF SEXUAL ASSAULT

Sexual assault.

An offense that meets the definition of rape, fondling, incest, or statutory rape as used in the FBI's Uniform Crime Reporting (UCR) program.

Rape.

The penetration, no matter how slight, of the vagina or anus with any body part or object, or oral penetration by a sex organ of another person, without the consent of the victim.

Fondling.

The touching of the private body parts of another person for the purpose of sexual gratification, without the consent of the victim, including instances where the victim is incapable of giving consent because of his/her age or because of his/her temporary or permanent mental incapacity.

Incest.

Sexual intercourse between persons who are related to each other within the degrees wherein marriage is prohibited by law.

Statutory rape.

Sexual intercourse with a person who is under the statutory age of consent.



STATE OF NEW MEXICO DEFINITIONS OF SEXUAL ASSAULT

The state of New Mexico does not have a separate definition for Sexual Assault. New Mexico Statutes Chapter 30 - Criminal Offenses, Article 9 - Sexual Offenses address the crimes of rape, fondling, incest, and statutory rape. *Criminal Sexual Penetration (NMSA 1978, § 30-9-11)*, *Criminal Sexual Contact (NMSA 1978, § 30-9-12)*, and *Criminal Sexual Contact with a Minor (NMSA 1978, § 30-9-13)*.



Section 30-9-11 - Criminal sexual penetration.

- A) Criminal sexual penetration is the unlawful and intentional causing of a person to engage in sexual intercourse, cunnilingus, fellatio or anal intercourse or the causing of penetration, to any extent and with any object, of the genital or anal openings of another, whether or not there is any emission.
- B) Criminal sexual penetration does not include medically indicated procedures.
- C) Aggravated criminal sexual penetration consists of all criminal sexual penetration perpetrated on a child under thirteen years of age with an intent to kill or with a depraved mind regardless of human life. Whoever commits aggravated criminal sexual penetration is guilty of a first degree felony for aggravated criminal sexual penetration.
- D) Criminal sexual penetration in the first degree consists of all criminal sexual penetration perpetrated:
 - 1) on a child under thirteen years of age; oR
 - 2) by the use of force or coercion that results in great bodily harm or great mental anguish to the victim.

Whoever commits criminal sexual penetration in the first degree is guilty of a first degree felony.

- E) Criminal sexual penetration in the second degree consists of all criminal sexual penetration perpetrated:
 - 1) by the use of force or coercion on a child thirteen to eighteen years of age;
 - 2) on an inmate confined in a correctional facility or jail when the perpetrator is in a position of authority over the inmate;
 - 3) by the use of force or coercion that results in personal injury to the victim;
 - 4) by the use of force or coercion when the perpetrator is aided or abetted by one or more persons;
 - 5) in the commission of any other felony; or
 - 6) when the perpetrator is armed with a deadly weapon.

Whoever commits criminal sexual penetration in the second degree is guilty of a second degree felony. Whoever commits criminal sexual penetration in the second degree when the victim is a child who is thirteen to eighteen years of age is guilty of a second degree felony for a sexual offense against a child and, notwithstanding the provisions of Section 31-18-15 NMSA 1978, shall be sentenced to a minimum term of imprisonment of three years, which shall not be suspended or deferred. The imposition of a minimum, mandatory term of imprisonment pursuant to the provisions of this subsection shall not be interpreted to preclude the imposition of sentencing enhancements pursuant to the provisions of the Criminal Sentencing Act [Chapter 31, Article 18 NMSA 1978].

- F) Criminal sexual penetration in the third degree consists of all criminal sexual penetration perpetrated through the use of force or coercion not otherwise specified in this section.

Whoever commits criminal sexual penetration in the third degree is guilty of a third degree felony.

- G) Criminal sexual penetration in the fourth degree consists of all criminal sexual penetration:
 - 1) not defined in Subsections D through F of this section perpetrated on a child thirteen to sixteen years of age when the perpetrator is at least eighteen years of age and is at least four years older than the child and not the spouse of that child; or
 - 2) perpetrated on a child thirteen to eighteen years of age when the perpetrator, who is a licensed school employee, an unlicensed school employee, a school contract employee, a school health service provider or a school volunteer, and who is at least eighteen years of age and is at least four years older than the child and not the spouse of that child, learns while performing services in or for a school that the child is a student in a school.

Whoever commits criminal sexual penetration in the fourth degree is guilty of a fourth degree felony.



Section 30-9-12 - Criminal sexual contact.

- A) Criminal sexual contact is the unlawful and intentional touching of or application of force, without consent, to the unclothed intimate parts of another who has reached his eighteenth birthday, or intentionally causing another who has reached his eighteenth birthday to touch one's intimate parts.
- B) Criminal sexual contact does not include touching by a psychotherapist on his patient that is:
- 1) inadvertent;
 - 2) casual social contact not intended to be sexual in nature; or
 - 3) generally recognized by mental health professionals as being a legitimate element of psychotherapy.
- C) Criminal sexual contact in the fourth degree consists of all criminal sexual contact perpetrated:
- 1) by the use of force or coercion that results in personal injury to the victim;
 - 2) by the use of force or coercion when the perpetrator is aided or abetted by one or more persons; or
 - 3) when the perpetrator is armed with a deadly weapon.
- Whoever commits criminal sexual contact in the fourth degree is guilty of a fourth degree felony
- D) Criminal sexual contact is a misdemeanor when perpetrated with the use of force or coercion.
- E) For the purposes of this section, "intimate parts" means the primary genital area, groin, buttocks, anus or breast.

Section 30-9-13 - Criminal Sexual Contact of a Minor.

- A) The unlawful and intentional touching of or applying force to the intimate parts of a minor or the unlawful and intentional causing of a minor to touch one's intimate parts. For the purposes of this section, "intimate parts" means the primary genital area, groin, buttocks, anus or breast.
- B) Criminal sexual contact of a minor in the second degree consists of all criminal sexual contact of the unclothed intimate parts of a minor perpetrated:
- 1) on a child under thirteen years of age; or
 - 2) on a child thirteen to eighteen years of age when:
 - a) the perpetrator is in a position of authority over the child and uses that authority to coerce the child to submit;
 - b) the perpetrator uses force or coercion that results in personal injury to the child;
 - c) the perpetrator uses force or coercion and is aided or abetted by one or more persons; or
 - d) the perpetrator is armed with a deadly weapon.

Whoever commits criminal sexual contact of a minor in the second degree is guilty of a second degree felony for a sexual offense against a child and, notwithstanding the provisions of Section 31-18-15 NMSA 1978, shall be sentenced to a minimum term of imprisonment of three years, which shall not be suspended or deferred. The imposition of a minimum, mandatory term of imprisonment pursuant to the provisions of this subsection shall not be interpreted to preclude the imposition of sentencing enhancements pursuant to the provisions of Sections 31-18-17, 31-18-25 and 31-18-26 NMSA 1978.

- C) Criminal sexual contact of a minor in the third degree consists of all criminal sexual contact of a minor perpetrated:
- 1) on a child under thirteen years of age; or
 - 2) on a child thirteen to eighteen years of age when:
 - a) the perpetrator is in a position of authority over the child and uses this authority to coerce the child to submit;

SEXUAL OFFENSE DEFINITIONS, CONT.



- b) the perpetrator uses force or coercion which results in personal injury to the child;
- c) the perpetrator uses force or coercion and is aided or abetted by one or more persons; or
- d) the perpetrator is armed with a deadly weapon.

Whoever commits criminal sexual contact of a minor in the third degree is guilty of a third degree felony for a sexual offense against a child.

D) Criminal sexual contact of a minor in the fourth degree consists of all criminal sexual contact:

- 1) not defined in Subsection C of this section, of a child thirteen to eighteen years of age perpetrated with force or coercion; or
- 2) of a minor perpetrated on a child thirteen to eighteen years of age when the perpetrator, who is a licensed school employee, an unlicensed school employee, a school contract employee, a school health service provider or a school volunteer, and who is at least eighteen years of age and is at least four years older than the child and not the spouse of that child, learns while performing services in or for a school that the child is a student in a school.

Whoever commits criminal sexual contact in the fourth degree is guilty of a fourth degree felony.

DOMESTIC VIOLENCE DEFINITIONS

VIOLENCE AGAINST WOMEN ACT DEFINITION OF DOMESTIC VIOLENCE



Domestic violence.

A felony or misdemeanor crime of violence committed—

- A) By a current or former spouse or intimate partner of the victim
- B) By a person with whom the victim shares a child in common;
- C) By a person who is cohabitating with, or has cohabitated with, the victim as a spouse or intimate partner;
- D) By a person similarly situated to a spouse of the victim under the domestic or family violence laws of the jurisdiction in which the crime of violence occurred, or
- E) By any other person against an adult or youth victim who is protected from that person's acts under the domestic or family violence laws of the jurisdiction in which the crime of violence occurred.

STATE OF NEW MEXICO DEFINITIONS OF DOMESTIC VIOLENCE



Under New Mexico state law, domestic violence is defined as felony and misdemeanor crimes under the **New Mexico Crimes Against Household Members Act**. Crimes included under the New Mexico Crimes Against Household Members Act are assault, aggravated assault, assault with intent to commit a violent felony, battery, and aggravated battery. A “household member” is a spouse, former spouse, parent, present or former stepparent, present or former parent-in-law, grandparent, grandparent-in-law, a co-parent of a child, or person with whom someone has had a continuing personal relationship. Violation of any provision of an order of protection issued under the Family Violence Protection Act is a misdemeanor crime and constitutes contempt of court and may result in a fine or imprisonment or both. *NMSA 1978, § 30-3-10 through § 30-3-18, et seq., “Crimes Against Household Members Act” (includes dating violence).*

Section 30-3-11 - Definitions.

As used in the Crimes Against Household Members Act:

- A) “household member” means a spouse, former spouse, parent, present or former stepparent, present or former parent in-law, grandparent, grandparent-in-law, a co-parent of a child or a person with whom a person has had a continuing personal relationship. Cohabitation is not necessary to be deemed a household



member for the purposes of the Crimes Against Household Members Act;

- B) “continuing personal relationship” means a dating or intimate relationship;
- C) “strangulation” means the unlawful touching or application of force to another person’s neck or throat with intent to injure that person and in a manner whereby great bodily harm or death can be inflicted, the result of which impedes the person’s normal breathing or blood circulation; and
- D) “suffocation” means the unlawful touching or application of force that blocks the nose or mouth of another person with intent to injure that person and in a manner whereby great bodily harm or death can be inflicted, the result of which impedes the person’s normal breathing or blood circulation.

Section 30-3-12 - Assault against a household member.

An attempt to commit a battery against a household member; or any unlawful act, threat or menacing conduct that causes a household member to reasonably believe that he is in danger of receiving an immediate battery. Whoever commits assault against a household member is guilty of a petty misdemeanor.

Section 30-3-13 - Aggravated assault against a household member.

Unlawfully assaulting or striking at a household member with a deadly weapon; or willfully and intentionally assaulting a household member with intent to commit any felony. Whoever commits aggravated assault against a household member is guilty of a fourth degree felony.

Section 30-3-14 - Assault against a household member with intent to commit a violent felony.

Any person assaulting a household member with intent to kill or commit any murder, mayhem, criminal sexual penetration in the first, second or third degree, robbery, kidnapping, false imprisonment or burglary. Whoever commits assault against a household member with intent to commit a violent felony is guilty of a third degree felony.

Section 30-3-15 - Battery against a household member.

- A) The unlawful, intentional touching or application of force to the person of a household member, when done in a rude, insolent or angry manner.
- B) Whoever commits battery against a household member is guilty of a misdemeanor.
- C) Upon conviction pursuant to this section, an offender shall be required to participate in and complete a domestic violence offender treatment or intervention program approved by the children, youth and families department pursuant to rules promulgated by the department that define the criteria for such programs.
- D) Notwithstanding any provision of law to the contrary, if a sentence imposed pursuant to this section is suspended or deferred in whole or in part, the period of probation may extend beyond three hundred sixty-four days but may not exceed two years. If an offender violates a condition of probation, the court may impose any sentence that the court could originally have imposed and credit shall not be given for time served by the offender on probation; provided that the total period of incarceration shall not exceed three hundred sixty-four days and the combined period of incarceration and probation shall not exceed two years.

Section 30-3-16 - Aggravated battery against a household member.

- A) The unlawful touching or application of force to the person of a household member with intent to injure that person or another.
- B) Whoever commits aggravated battery against a household member is guilty of a misdemeanor if the aggravated battery against a household member is committed by inflicting an injury to that person that is not



likely to cause death or great bodily harm, but that does cause painful temporary disfigurement or temporary loss or impairment of the functions of any member or organ of the body.

- C) Whoever commits aggravated battery against a household member is guilty of a third degree felony if the aggravated battery against a household member is committed:
 - 1) inflicting great bodily harm;
 - 2) with a deadly weapon;
 - 3) by strangulation or suffocation; or
 - 4) in any manner whereby great bodily harm or death can be inflicted.
- D) Upon conviction pursuant to Subsection B of this section, an offender shall be required to participate in and complete a domestic violence offender treatment or intervention program approved by the children, youth and families department pursuant to rules promulgated by the department that define the criteria for such programs.
- E) Notwithstanding any provision of law to the contrary, if a sentence imposed pursuant to the provisions of Subsection B of this section is suspended or deferred in whole or in part, the period of probation may extend beyond three hundred sixty-four days but may not exceed two years. If an offender violates a condition of probation, the court may impose any sentence that the court could originally have imposed and credit shall not be given for time served by the offender on probation; provided that the total period of incarceration shall not exceed three hundred sixty-four days and the combined period of incarceration and probation shall not exceed two years.

Section 30-3-17 - Multiple convictions of battery or aggravated battery.

Whoever commits three offenses of battery against a household member as provided in Section 30-3-15 NMSA 1978 or aggravated battery against a household member as provided in Subsection B of Section 30-3-16 NMSA 1978, or any combination thereof, when the household member is a spouse, a former spouse, a co-parent of a child or a person with whom the offender has had a continuing personal relationship is guilty of a fourth degree felony. Whoever commits four or more offenses of battery against a household member as provided in Section 30-3-15 NMSA 1978 or aggravated battery against a household member as provided in Subsection B of Section 30-3-16 NMSA 1978, or any combination thereof, when the household member is a spouse, a former spouse, a co-parent of a child or a person with whom the offender has had a continuing personal relationship is guilty of a third degree felony. For the purpose of determining the number of offenses committed, each offense must have been committed after conviction for the preceding offense.

Section 30-3-18 - Criminal damage to property of household member; deprivation of property of household member.

Criminal damage to the property of a household member consists of intentionally damaging real, personal, community or jointly owned property of a household member with the intent to intimidate, threaten or harass that household member. Whoever commits criminal damage to the property of a household member is guilty of a misdemeanor, except that when the damage to the household member's interest in the property amounts to more than one thousand dollars (\$1,000), the offender is guilty of a fourth degree felony. Deprivation of the property of a household member consists of intentionally depriving a household member of the use of separate, community or jointly owned personal property of the household member with the intent to intimidate or threaten that household member. Whoever commits deprivation of the property of a household member is guilty of a misdemeanor.

DATING VIOLENCE DEFINITIONS

VIOLENCE AGAINST WOMEN ACT DEFINITION OF DATING VIOLENCE



Dating violence.

Violence committed by a person who is or has been in a social relationship of a romantic or intimate nature with the victim. The existence of such a relationship shall be determined based on the reporting party's statement and with consideration of the length of the relationship, the type of relationship, and the frequency of interaction between the persons involved in the relationship. For the purposes of this definition—

- A) Dating violence includes, but is not limited to, sexual or physical abuse or the threat of such abuse.
- B) Dating violence does not include acts covered under the definition of domestic violence.



STATE OF NEW MEXICO DEFINITION OF DATING VIOLENCE

Dating violence.

Under New Mexico's Crimes Against Household Members Act, someone with whom a person has a dating or intimate relationship is considered to be a household member. Any of the felony and misdemeanor crimes enumerated as domestic violence in the Crimes Against Household Members Act are also crimes when committed against someone with whom the offender has a dating or intimate relationship.

STALKING DEFINITIONS



VIOLENCE AGAINST WOMEN ACT DEFINITION OF STALKING

Stalking.

Engaging in a course of conduct directed at a specific person that would cause a reasonable person to fear for the person's safety or the safety of others or suffer substantial emotional distress.

- a) Course of conduct means two or more acts, including, but not limited to, acts in which the stalker directly, indirectly, or through third parties, by any action, method, device, or means, follows, monitors, observes, surveils, threatens, or communicates to or about a person, or interferes with a person's property.
- A) Reasonable person means a reasonable person under similar circumstances and with similar identities to the victim.
- B) Substantial emotional distress means significant mental suffering or anguish that may but does not necessarily, require medical or other professional treatment or counseling.

STATE OF NEW MEXICO DEFINITIONS OF STALKING



State statutes relating to stalking and harassment are contained within New Mexico's "**Harassment and Stalking Act**". *Stalking - NMSA 1978, § 30-3A-1 et seq., "Harassment and Stalking Act"*.

Section 30-3A-2 - Harassment.

Harassment consists of knowingly pursuing a pattern of conduct that is intended to annoy, seriously alarm or terrorize another person and that serves no lawful purpose. The conduct must be such that it would cause a reasonable person to suffer substantial emotional distress. Whoever commits harassment is guilty of a misdemeanor.

Section 30-3A-3 - Stalking.

A) Stalking consists of knowingly pursuing a pattern of conduct, without lawful authority, directed at a specific individual when the person intends that the pattern of conduct would place the individual in reasonable apprehension of death, bodily harm, sexual assault, confinement or restraint of the individual or another individual.



B) As used in this section:

- 1) “lawful authority” means within the scope of lawful employment or constitutionally protected activity; and
- 2) “pattern of conduct” means two or more acts, on more than one occasion, in which the alleged stalker by any action, method, device or means, directly, indirectly or through third parties, follows, monitors, surveils, threatens or communicates to or about a person.

C) Whoever commits stalking is guilty of a misdemeanor. Upon a second or subsequent conviction, the offender is guilty of a fourth degree felony.

D) In addition to any punishment provided pursuant to the provisions of this section, the court shall order a person convicted of stalking to participate in and complete a program of professional counseling at the person’s own expense or a domestic violence offender treatment or intervention program.

Section 30-3A-3.1 - Aggravated stalking.

A) Aggravated stalking consists of stalking perpetrated by a person:

- 1) who knowingly violates a permanent or temporary order of protection issued by a court, except that mutual violations of such orders may constitute a defense to aggravated stalking;
- 2) in violation of a court order setting conditions of release and bond;
- 3) when the person is in possession of a deadly weapon; or
- 4) when the victim is less than sixteen years of age.

B) Whoever commits aggravated stalking is guilty of a fourth degree felony. Upon a second or subsequent conviction, the offender is guilty of a third degree felony.

C) In addition to any punishment provided pursuant to the provisions of this section, the court shall order a person convicted of aggravated stalking to participate in and complete a program of professional counseling at his own expense.

Section 30-3A-4 - Exceptions.

The provisions of the [Harassment and] Stalking Act do not apply to picketing or public demonstrations that are lawful or that arise out of a bona fide labor dispute; or a peace officer in the performance of his duties.

CONSENT DEFINITIONS

UNIVERSITY OF NEW MEXICO DEFINITION OF CONSENT



Consent.

Consent is an affirmative, informed, and conscious decision to willingly engage in mutually acceptable sexual activity. Consent requires a clear affirmative act or statement by each participant to each sexual act in a sexual interaction. Consent demonstrates that the conduct in question is welcome or wanted. Relying solely on non-verbal communication can lead to miscommunication about one’s intent. Confusion or ambiguity may arise at any time during a sexual interaction. Therefore, it is essential that each participant makes clear their willingness to continue at each progression of the sexual interaction. Proof of consent or non-consent is not a burden placed on either party involved in an incident. Instead, the burden remains on UNM to determine if its policy has been violated. For information about incapacitation as it relates to the meaning of consent, visit [UAP 2740](#).

STATE OF NEW MEXICO DEFINITION OF CONSENT



HB 151 - Affirmative consent.

Affirmative, conscious and voluntary agreement to engage in sexual activity.



HOW UNM PROTECTS YOUR CONFIDENTIALITY

Whether or not you ask to remain anonymous when reporting an incident of alleged sexual assault, domestic violence, dating violence, or stalking to a University official, a victim's personal information is always held confidential and is never published or provided in any crime statistic, crime log, or campus notification. UNM maintains as confidential any accommodations or protective measures provided to the victim of an alleged VAWA offense, to the extent that maintaining such confidentiality would not impair the ability of the University to provide accommodations or protective measures. UNM will complete publicly available recordkeeping, including Clery Act reporting and disclosures, without the inclusion of personally identifying information about the victim, as defined in section 40002(a)(20) of the Violence Against Women Act of 1994 (42 U.S.C. 13925(a)(20)). If information needs to be shared among UNM officials, it must be on a need-to-know basis and as authorized under University Administrative Policy and federal and state law.

MORE INFORMATION

Contact the UNM Office of Compliance, Ethics & Equal Opportunity for additional information related to this packet.



UNM Office of Compliance, Ethics & Equal Opportunity (CEEEO)

609 Buena Vista Rd NE (Bldg 42)

Albuquerque, NM 87131

505-277-5251

ceeo@unm.edu | ceeo.unm.edu

[Online CEEEO complaint form](#)

[UNM EthicsPoint Hotline complaint form](#)

Clery Coordinator

Adrienne Helms: ahelms6@unm.edu

Title IX Coordinator

Dr. Angela Catena: acatena@unm.edu



THE UNIVERSITY OF
NEW MEXICO.